

Star Business Card

Overview

One of the limitations of Express to Print is the basic imposition tools on offer. We can step files up very easily on a sheet but no crop marks can pose a problem later at the finishing stages.

This demonstration shows that by supplying

documents with trim marks we can still make use of document type templates to easily produce a print ready file.

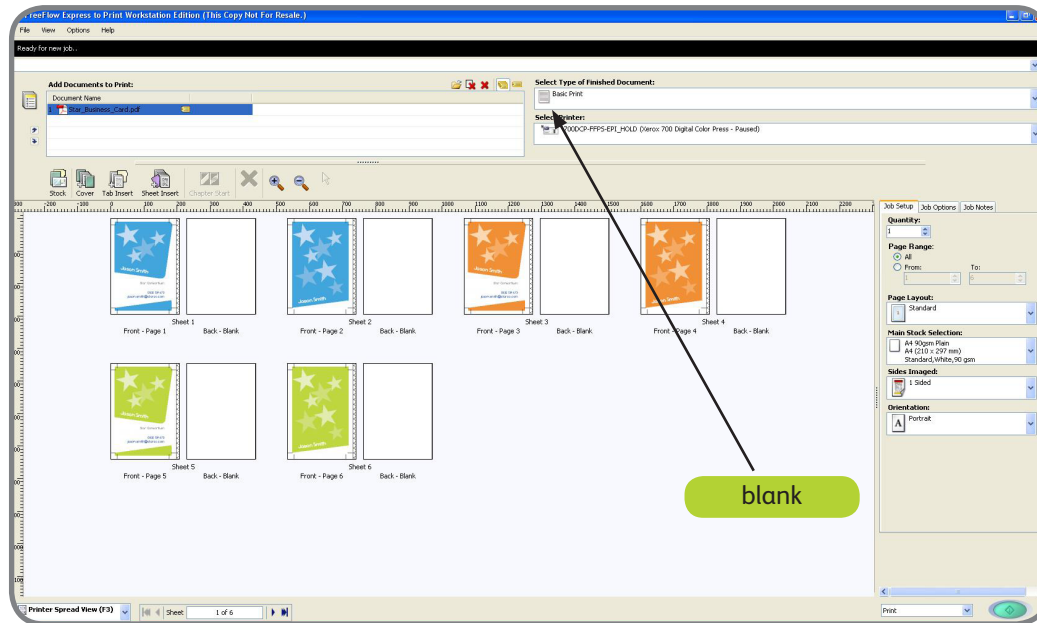
Here we impose a business card and send to print in a matter of seconds.

Technical Starting Point

- The epicenter copy of Express to Print is located on POD 1
- Please log on as an administrator to use this software.



1. Import document



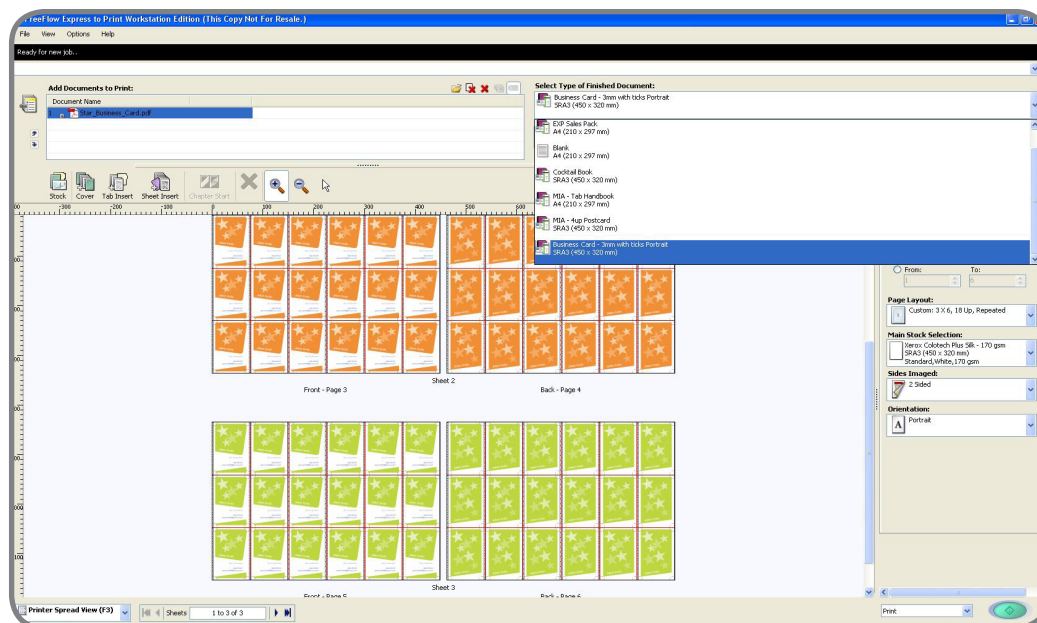
We have the choice with all our epicenter EXP samples to set them up manually or choose one of the pre defined “document type” templates.

It is recommended you import with the template set to “blank”

Make sure the template is set to “Blank”.

Select file “**Star_Business_Card.pdf**” and import to the stage.
Select Printer - Your choice (recommend 700DCP HOLD queue)

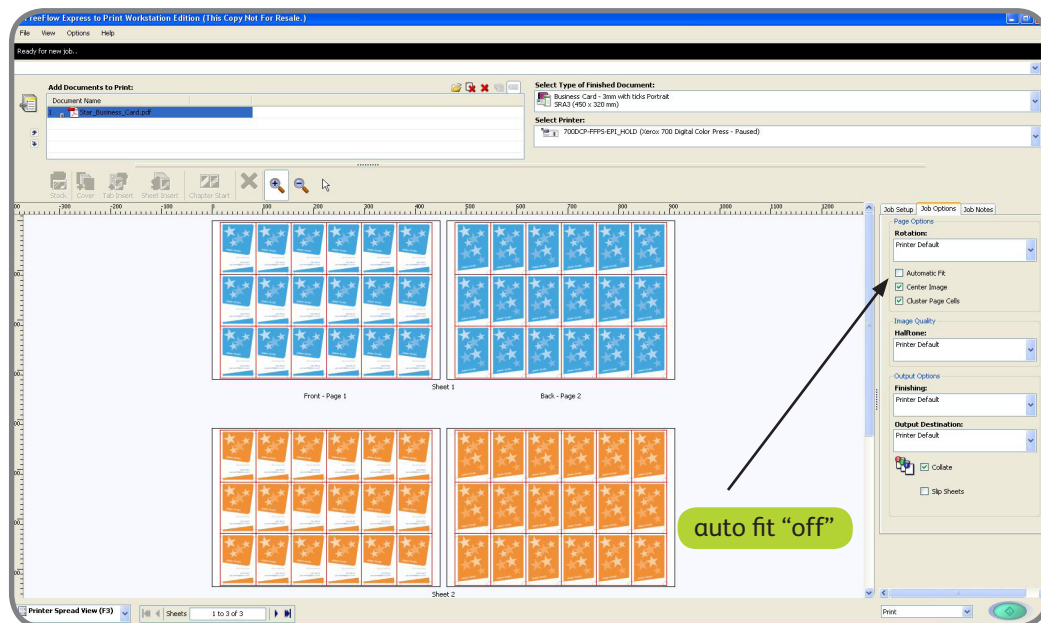
2. Select document type



Select the document type “**Business Card -3mm with ticks portrait**”

Your document will now inherit these presets onto the stage.
The file has been stepped up and backed up.

3. Amend Barcode



Make sure that **"Automatic fit"** is not selected aswell as **"Center image"** and **"cluster page cells"** are checked.

A final check then select **"Print"**