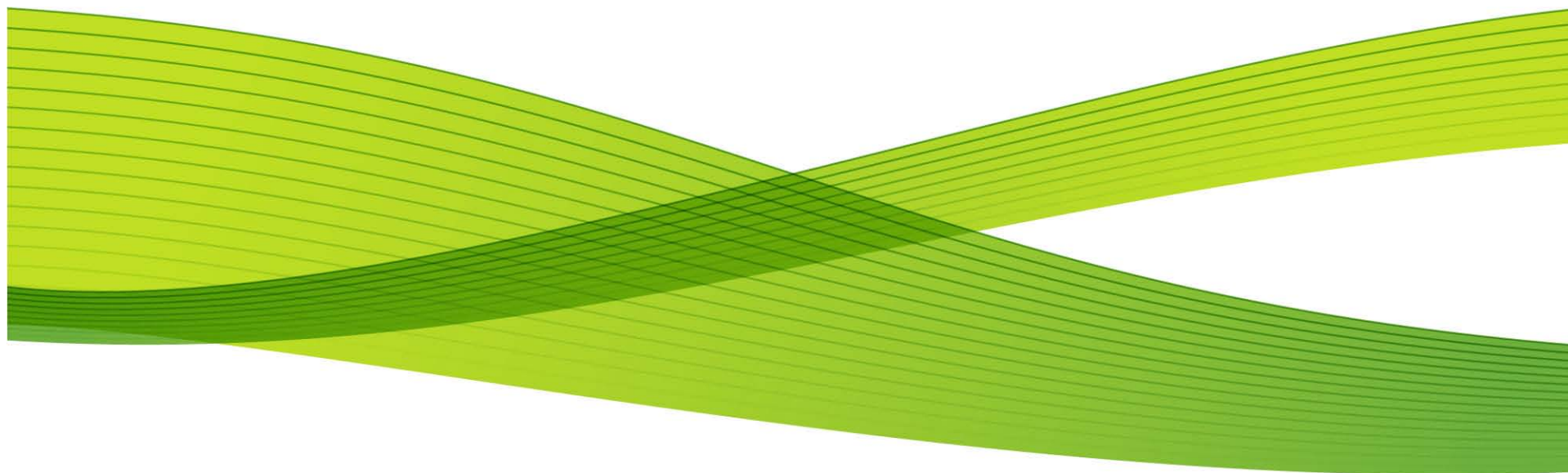


OneGifting

Demonstration Resources



epicenter

Demonstration

FUJI XEROX INTERNAL USE ONLY

Disclose to : ALL FX
Protect until : 20XX.XX.XX
Handling : No Copy etc.
Author : Dept. & Name
Prepared on : 200X.XX.XX

Due to internal proxy issues demonstrations of the full workflow have always proved challenging within the FX corporate environment!

By placing the application on a dedicated server we can bypass some of these issues helping you to showcase a seamless demonstration.



Connecting

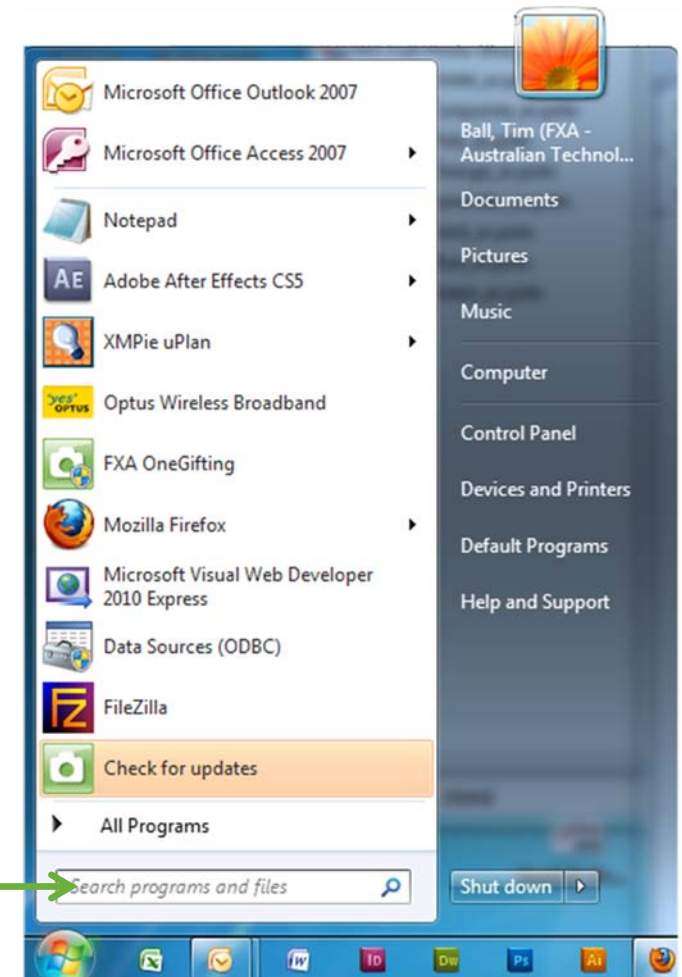
We connect to our internal server either on the corporate network or externally using your 3G cards.



Select the “Start” button on your PC



Now type “**mstsc**” into the search field



Connecting

This opens the “Remote Desktop Connection” box



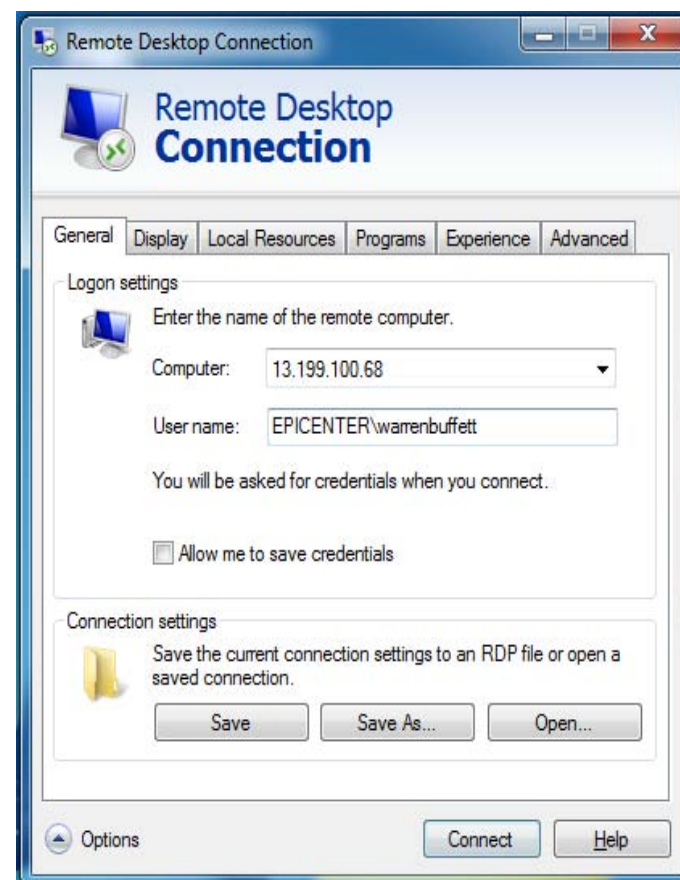
Enter the computer name:
13.199.100.68



Enter the User name (see below)
Epicenter\warrenbuffett

Optional user Logins

susananthony	Password1
timberners-lee	Password1
warrenbuffett	Password1



Connecting

Enter the user password.

We have multiple user log-ins to balance the user connections.

Please differ your user log in occasionally



Enter the Windows password
Password1

Optional user Logins

susananthony	Password1
timberners-lee	Password1
warrenbuffett	Password1

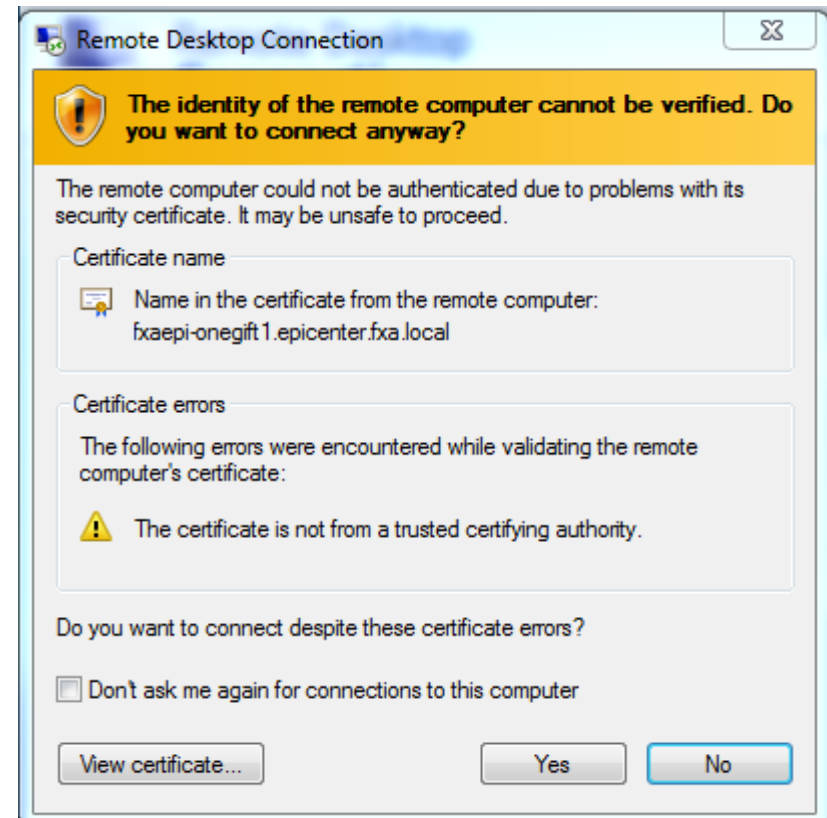


Connecting

FUJI XEROX INTERNAL USE ONLY

Disclose to : ALL FX
Protect until : 20XX.XX.XX
Handling : No Copy etc.
Author : Dept. & Name
Prepared on : 200X.XX.XX

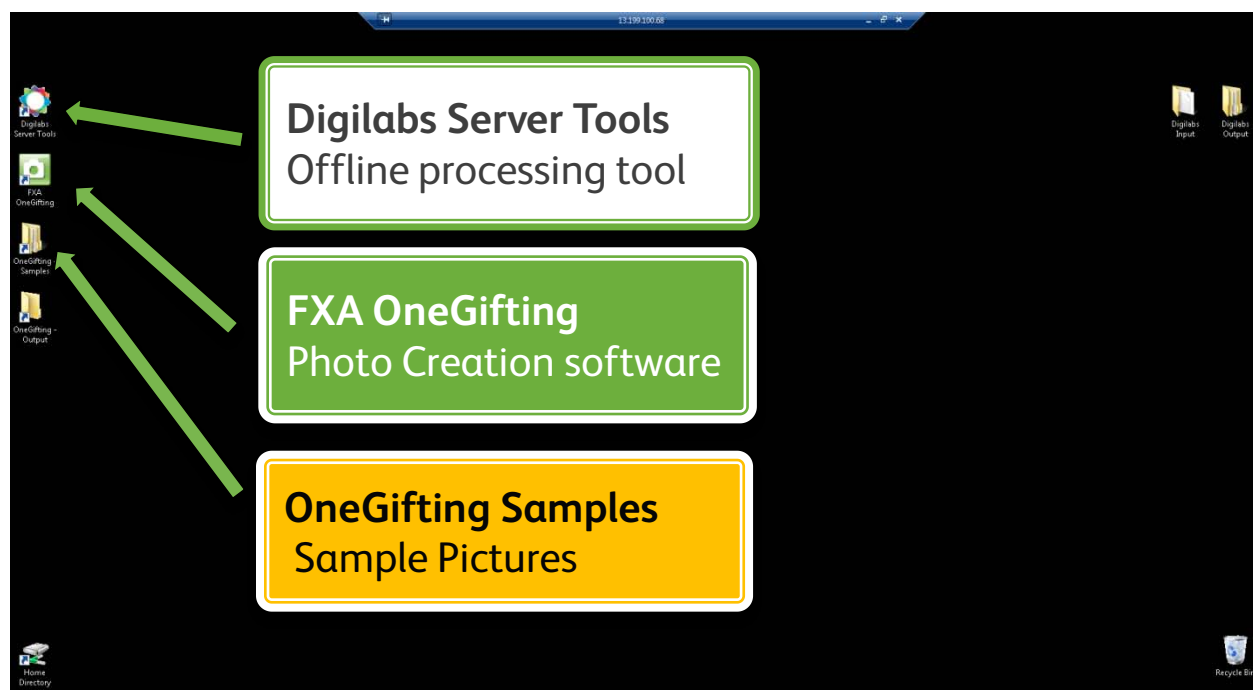
Authenticate server certificate



Simply select
Yes

OneGifting Server

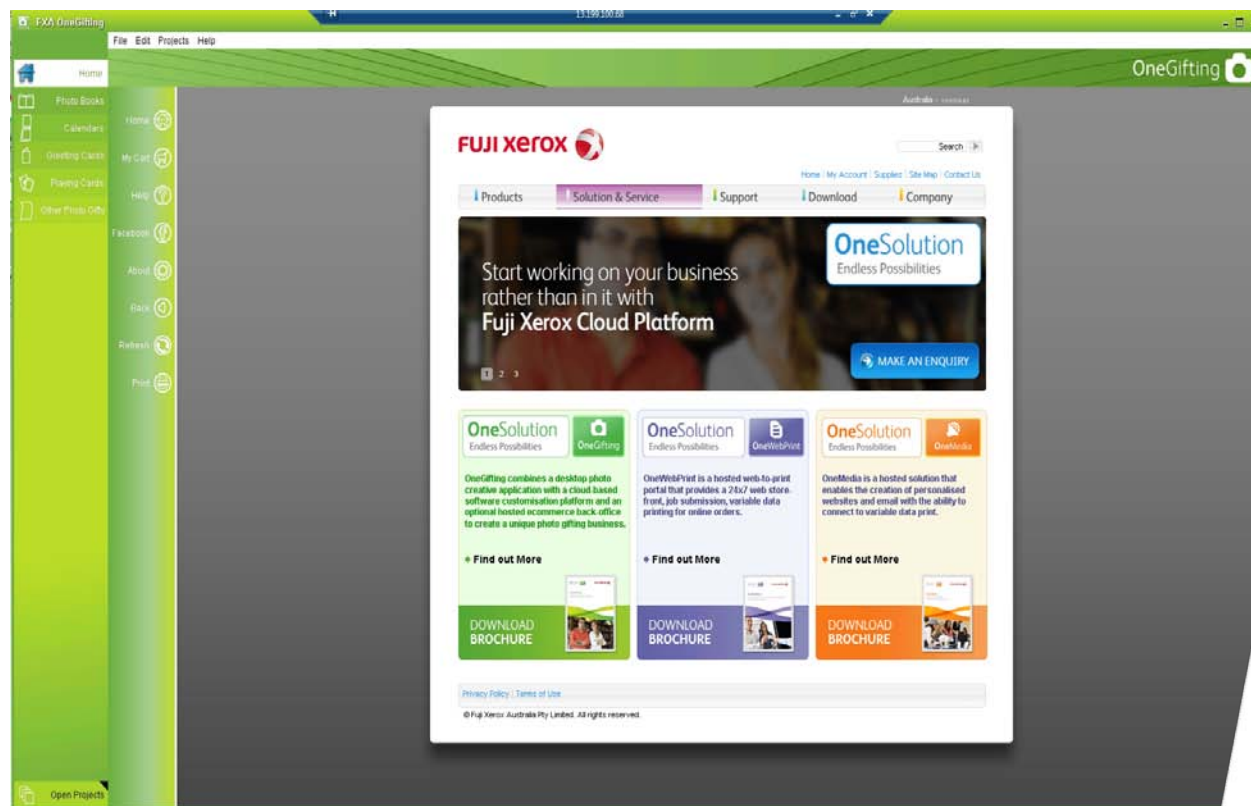
The server environment has two applications and a folder of sample images:



To get started select
FXA OneGifting

OneGifting Server

Photo gifting is a client side tool so the design and creation is whatever you want it to be.



A basic user guide can be found in Workflow Resources on the epiportal
<http://epiportal.aus.xerox.com/>

OneGifting Saving Files

To move or access any files locally including decrypted files. You can save them to this folder which is accessible on the corporate network



On your local computer to connect to this folder
\\13.199.100.61\wip\OneGifting_Output

Epicenter\susananthony

Password1

Questions

A few Frequently Asked Questions

Q. When I order I am asked to place credit card details in the shopping cart

A. Please use the following fictitious details: **4444333322221111** **04/14** **123**

Q. Are there any sample photos available to use?

A. Yes, there are a selection of sample pictures on the desktop in the folder “OneGifting – Samples”

Q. Can I upload my own photographs?

A. Please contact the epicenter

Q. Where do my completed orders get sent to?

A. In this instance our orders are sent to an internal ftp site. Files take around an hour to arrive at this location after processing. On the corporate network this can be accessed via:

\\tus.aus.xerox.com\onegift\upload *(Please note files will be deleted after a week)*

Q. Can my photobook be printed?

A. If there is a commercial business need (not friends birthday's, etc...) you can place a request on the epiportal. Please check first that your order can be fulfilled with regards to finishing.

Just a few usage guidelines

- Please only use this server for OneGifting demonstrations.
- No other software is to be loaded onto the server
- The internet is restricted on this site
- Please save your files once they are processed off the server, we have a clean up at the end of every week.

For any assistance please contact

Tim Ball (epicenter)

